

1. MELLÉKLET

Páronként szükséges



1 db 96 centis szürke

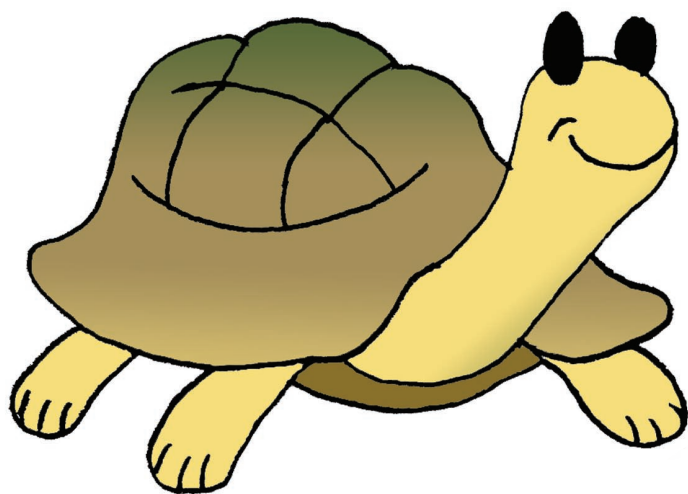
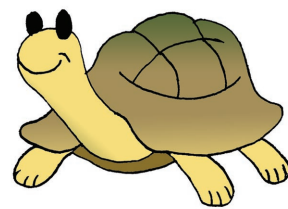
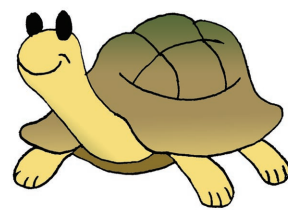
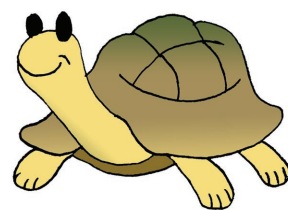
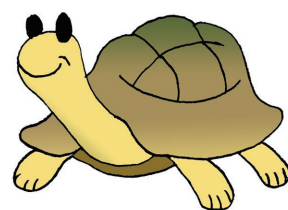
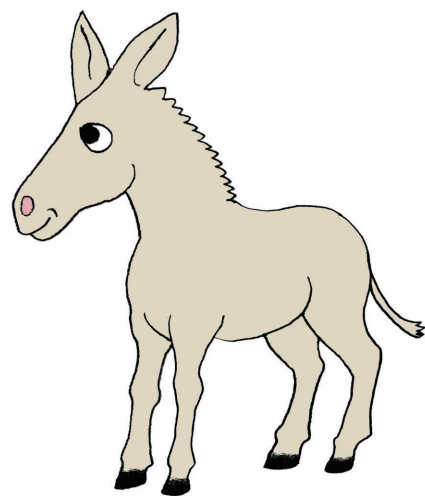
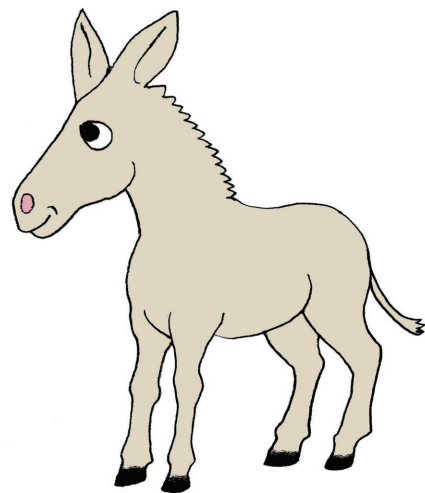
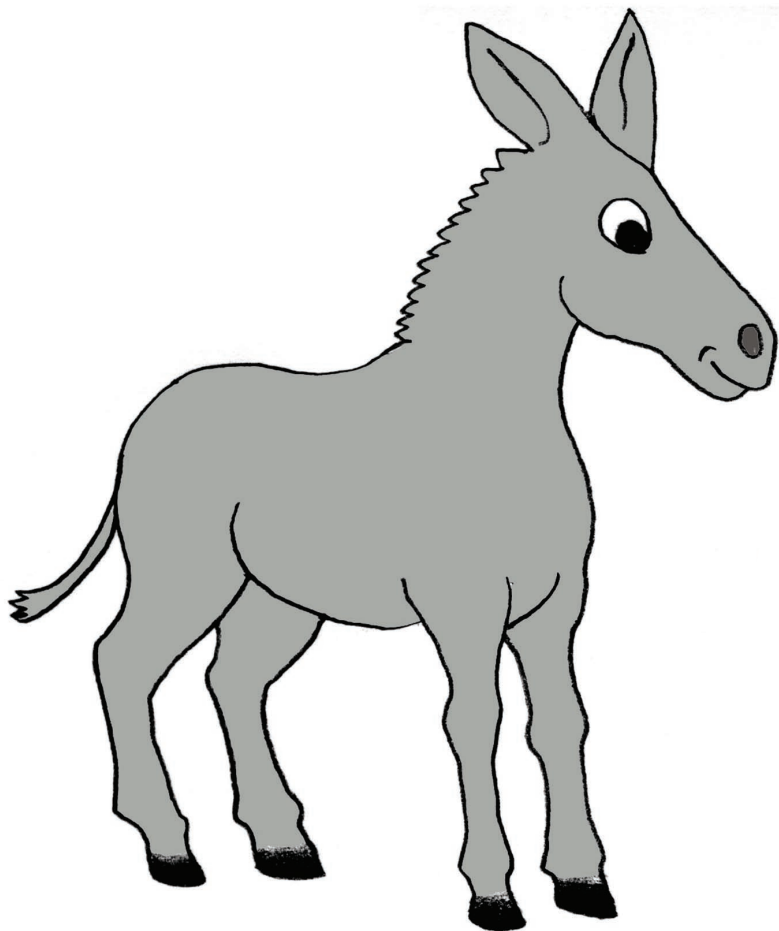
1 db 48 centis türkizkék

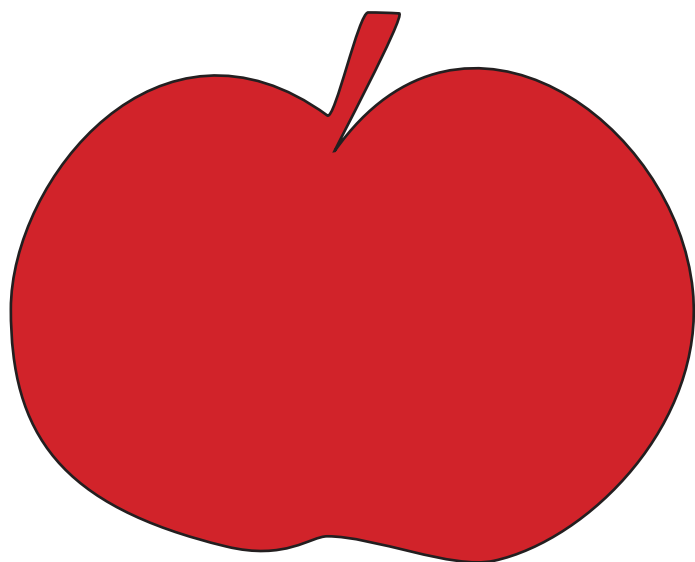
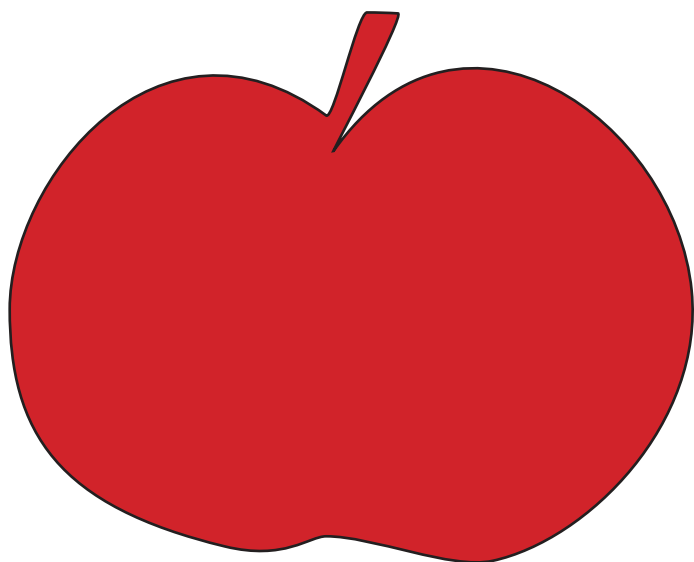
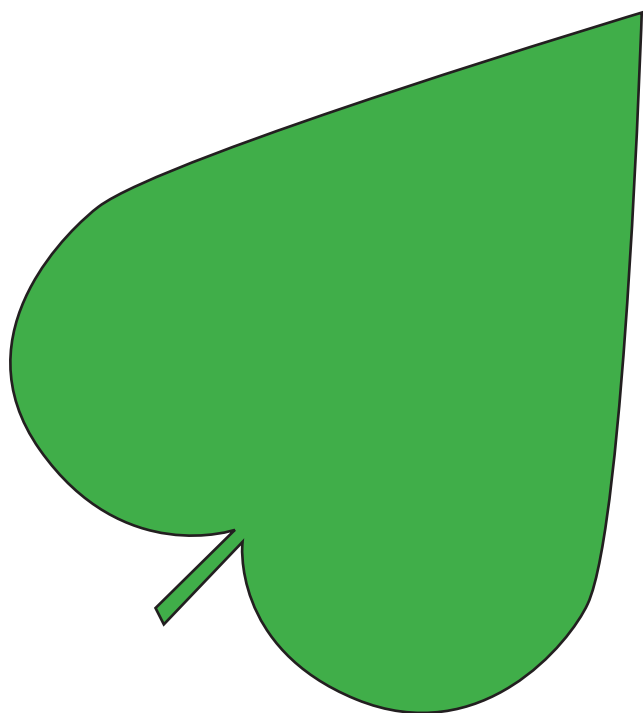
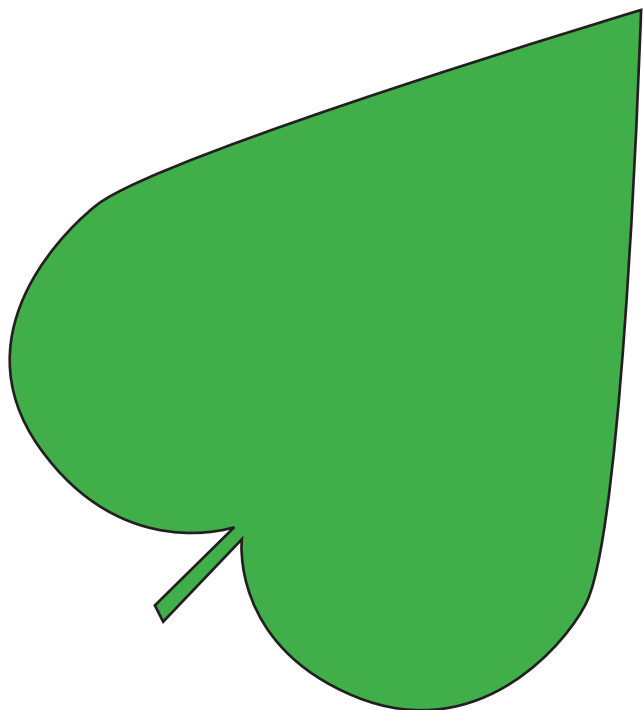
1 db 24 centis sötétrózsaszín

PAPÍRCSÍK – melyek 2 centi szélesek

2. MELLÉKLET

	a kék papírcsik	a rózsaszín papírcsik	a szürke papírcsik
			
			
			
			





egész

egész

ketted

ketted

fél

fél

negyed

negyed

negyed

negyed

